

USER MANUAL



PRFORM^{DBP}

OVERVIEW

Preset viewer

Preset up/down (auto-save)

Manual

LCD lock

Looper

Master effects

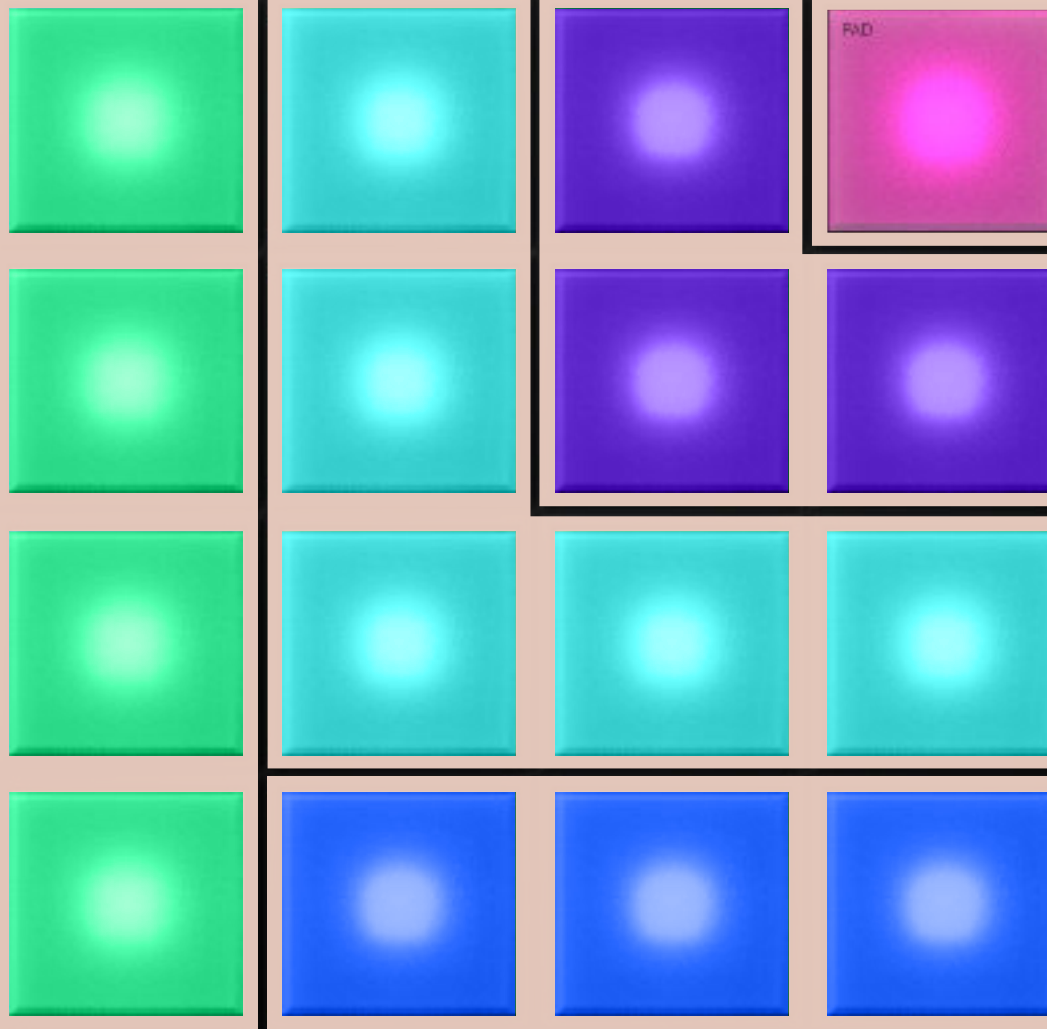
MIDI page

Preferences and links



Synthesizer parameters

Synthesizer parameters



Pad module trigger

Bass module triggers

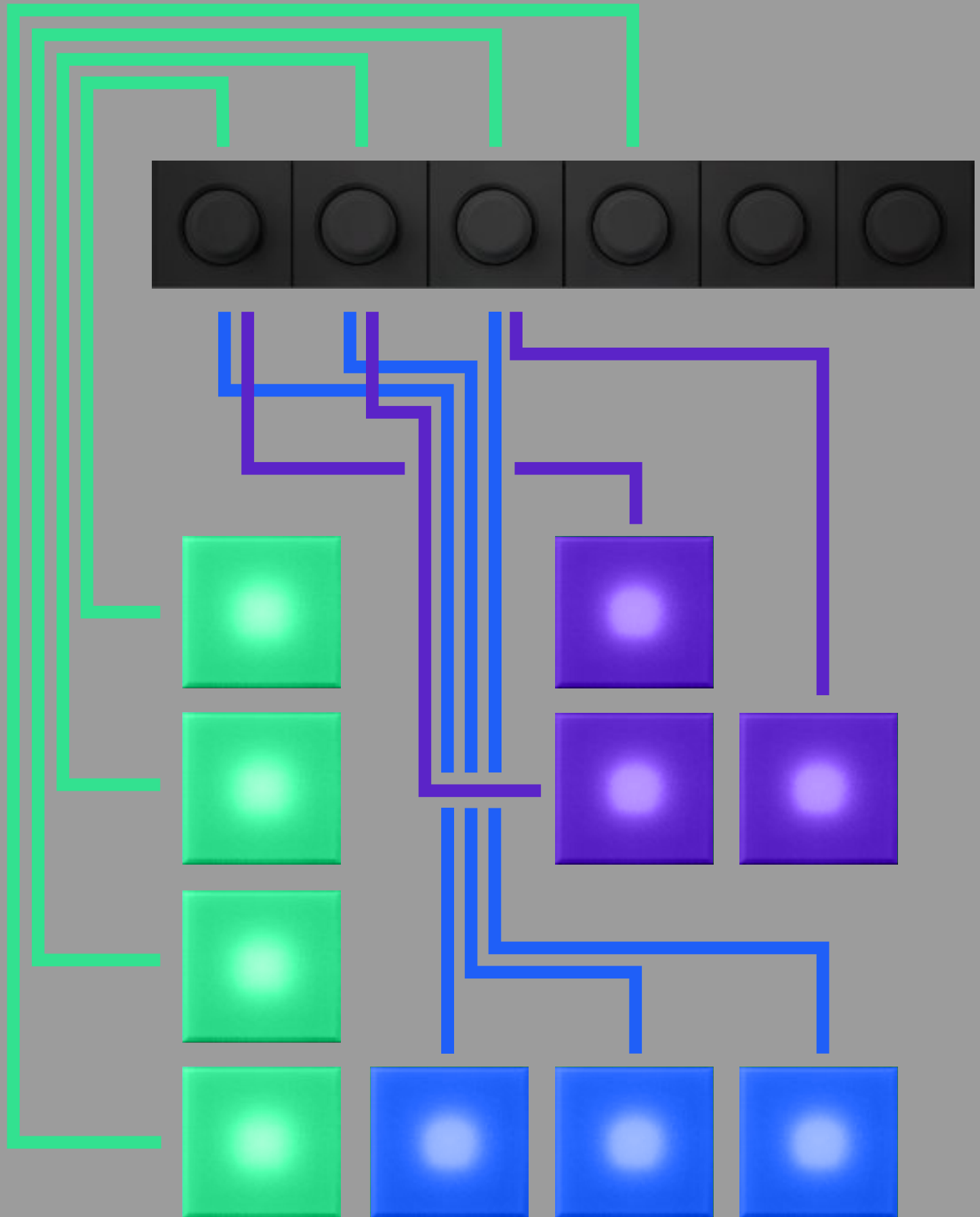
Drum modules triggers
noise, clap, bass drum,
snare, hi-hat

Lead synthesizer module

Super saw lead synthesizer

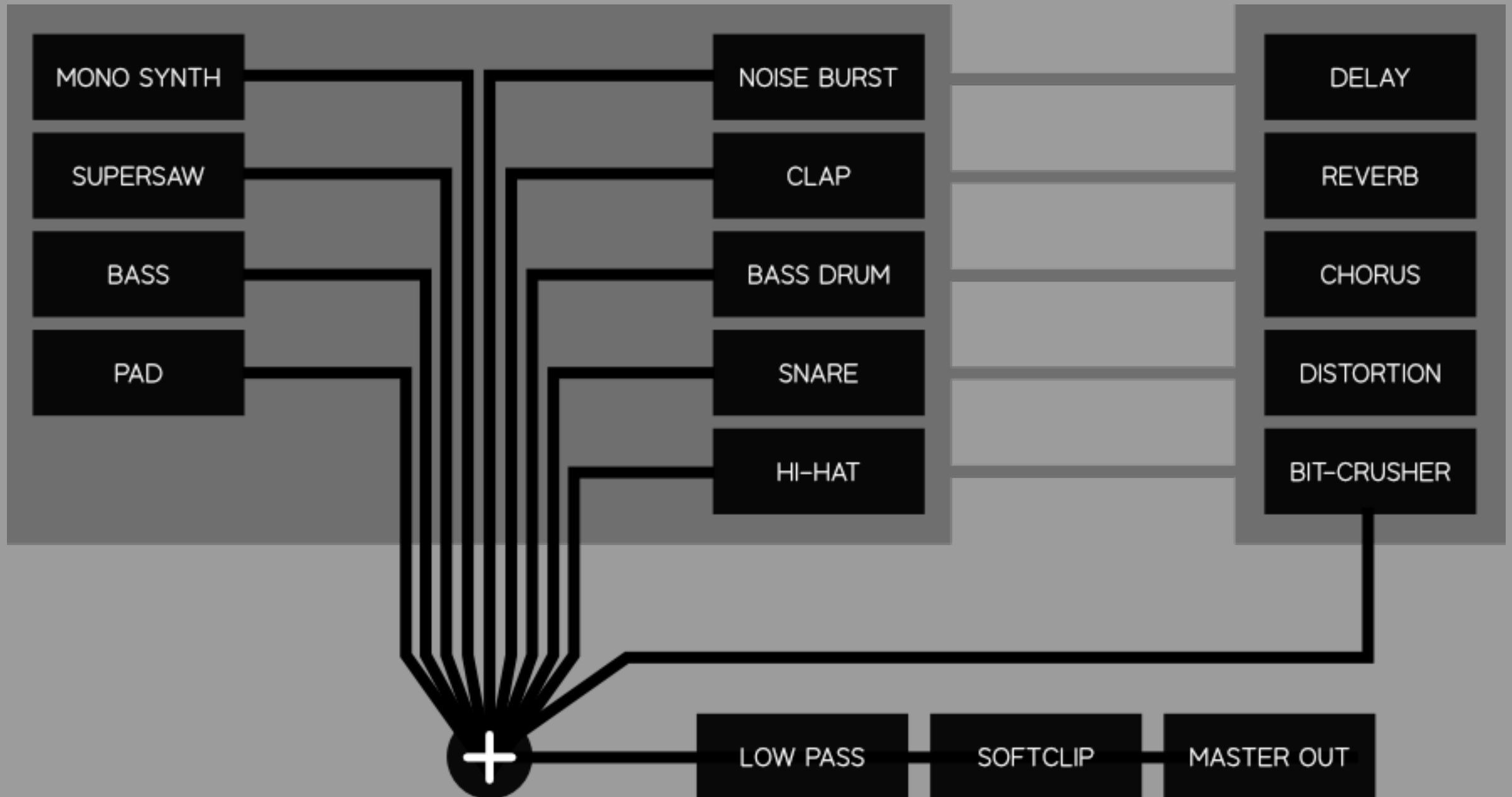
CONTROLLING PITCH

the following layout shows the relationship between pitch controls and pads.



SIGNAL FLOW

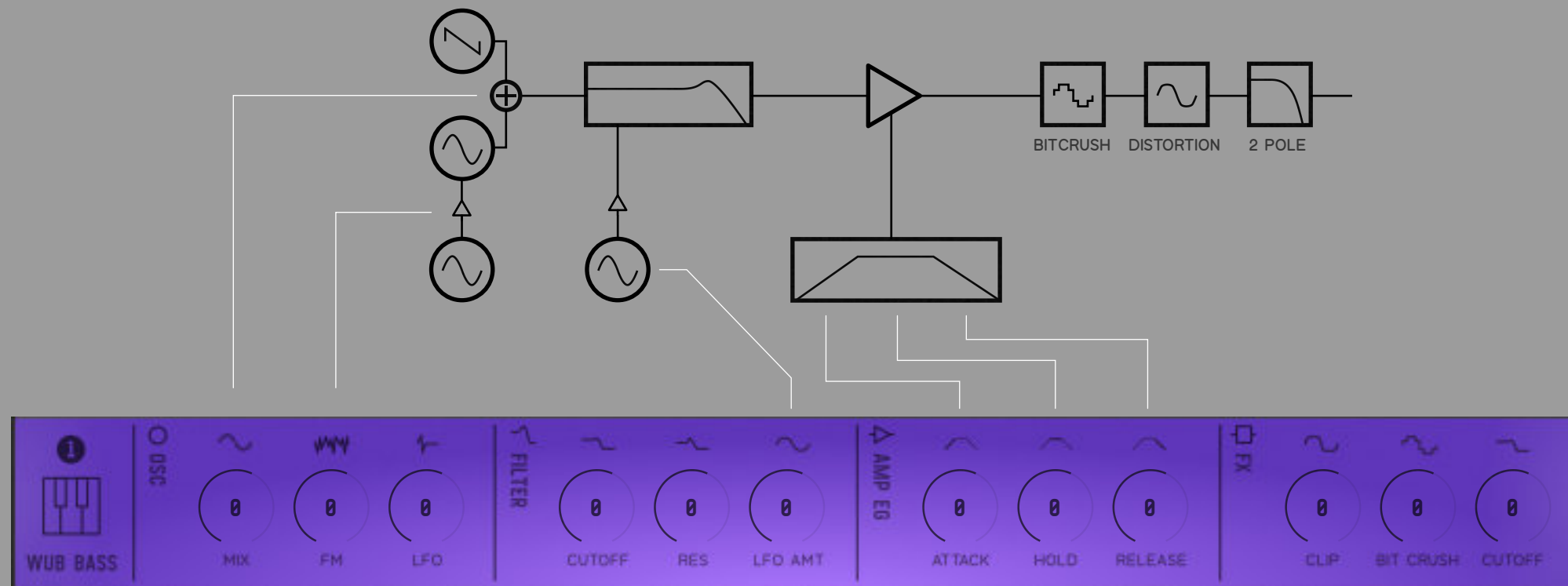
the following layout shows the signal flow



PRFORM SYNTHESIZER MODUALS

PRFORM has 9 synth modules, that can be triggered via the 16 pads. Each module has an "LCD display" for control of the synthesizers and effect parameters. The following pages examine these paramiters.



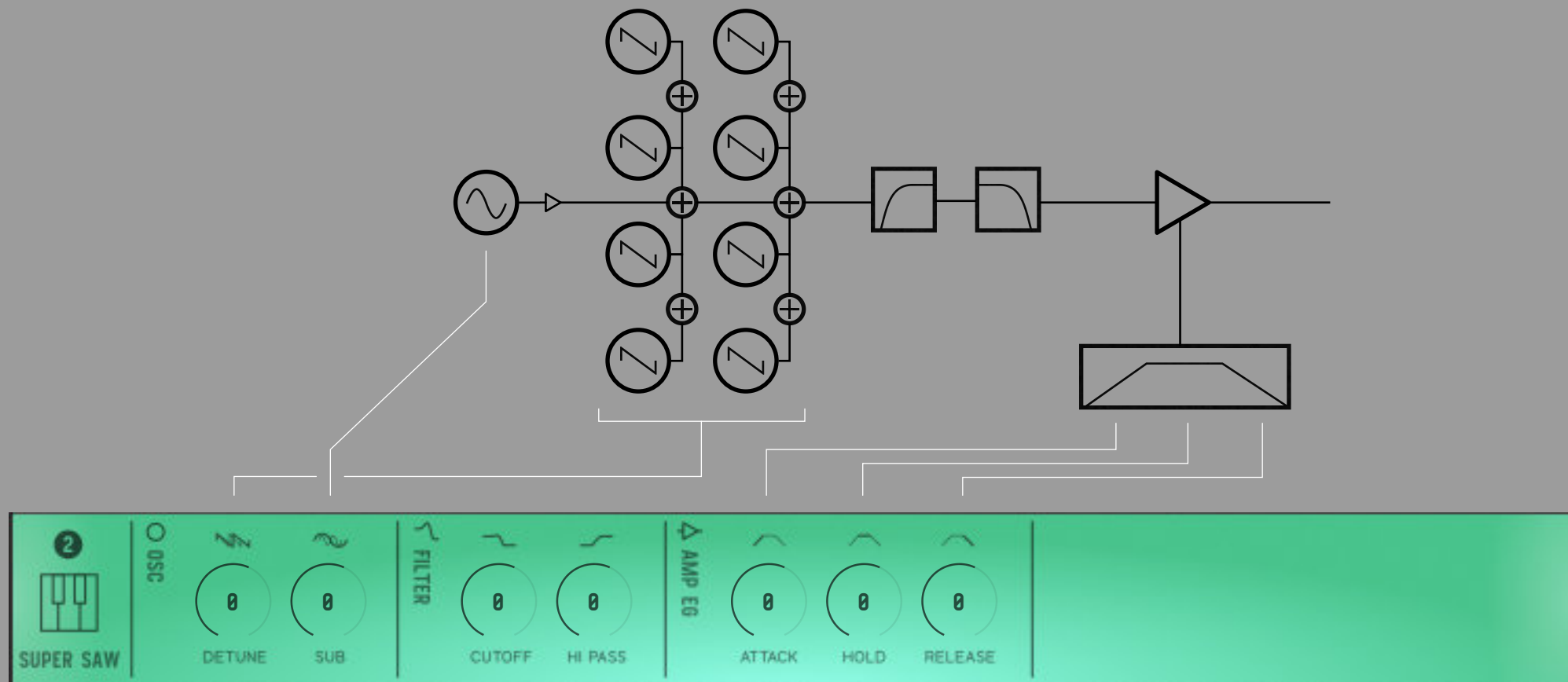


WUB BASS

The wub bass module has 3 trigger pads. The module comprises of an fm oscillator, a 6db/octave resonant low-pass filter connected to LFO for Wub bass, and distortion effects for extra synth mangling..

MIX Crossfade between sawtooth and fm pair
FM The index of modulator
LFO LFO rate, used for filter cutoff modulation

CUTOFF Filter cutoff
RES Amount of resonance
LFO AMT Amount of LFO modulation
AMP EG Control amplitude over time
CLIP Pre-gain to hard clipper
BIT CRUSH Resolution of bitcrusher
CUTOFF An extra low-pass filter



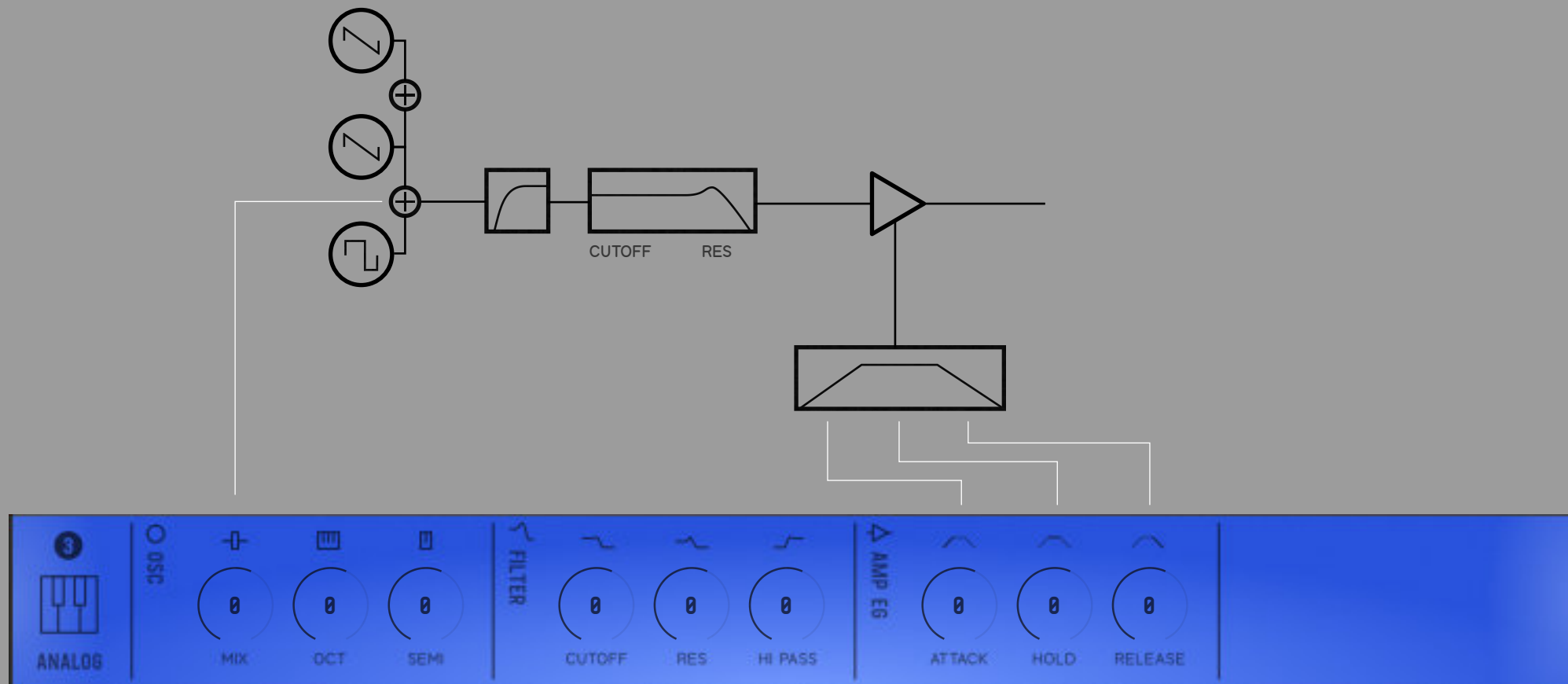
SUPER SAW

Supersaw lead – 8000 style detunable supersaw. It can be triggered by 4 trigger pads and has a 6db/oct high-pass and 12db/oct low-pass filters, plus a sub oscillator for extra bass.

DETUNE Amount of detune of the 8 oscillator
SUB Amplitude of sub oscillator

CUTOFF Low-pass filter cutoff
HI PASS Cutoff of hi-pass filter

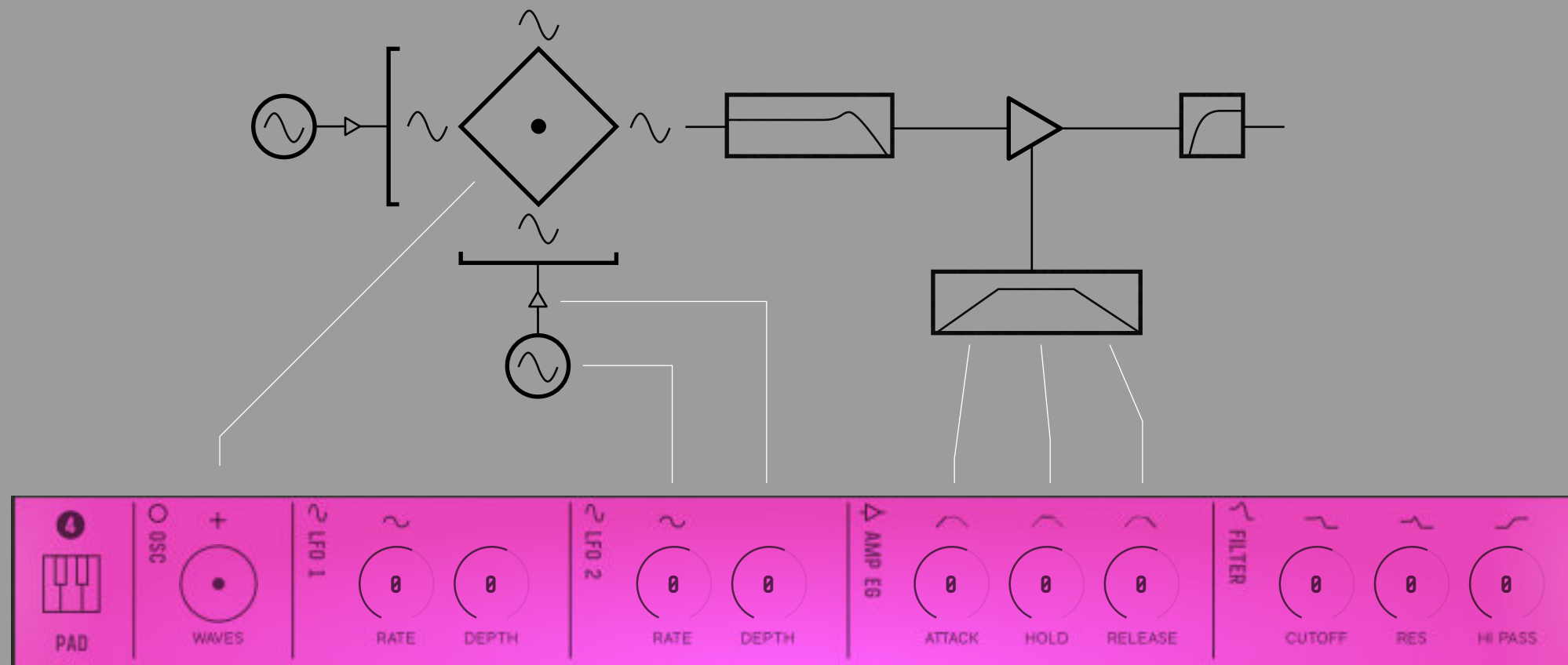
AMP EG Control amplitude over time



ANALOG

The analogue module can be triggered with 3 trigger pads and features a 24db/octave resonant ladder style filter and 12db/octave high-pass filter.

- MIX** Mix between sawtooth and pulse wave
- OCT** Change the pitch per octave for pulse wave
- SEMI** Change the pitch per semitone for pulse wave
- CUTOFF** Filter cutoff
- RES** Amount of resonance
- HI PASS** Cutoff of hi-pass filter
- AMP EG** Control amplitude over time



PAD

4 oscillator synth with 24db/octave resonant filter. Its oscillators amplitudes can be controlled via joystick and/or two LFOs

WAVES X/Y joystick for moving between 4 oscillators

RATE Speed of LFO
DEPTH Amount of modulation of X or Y axis

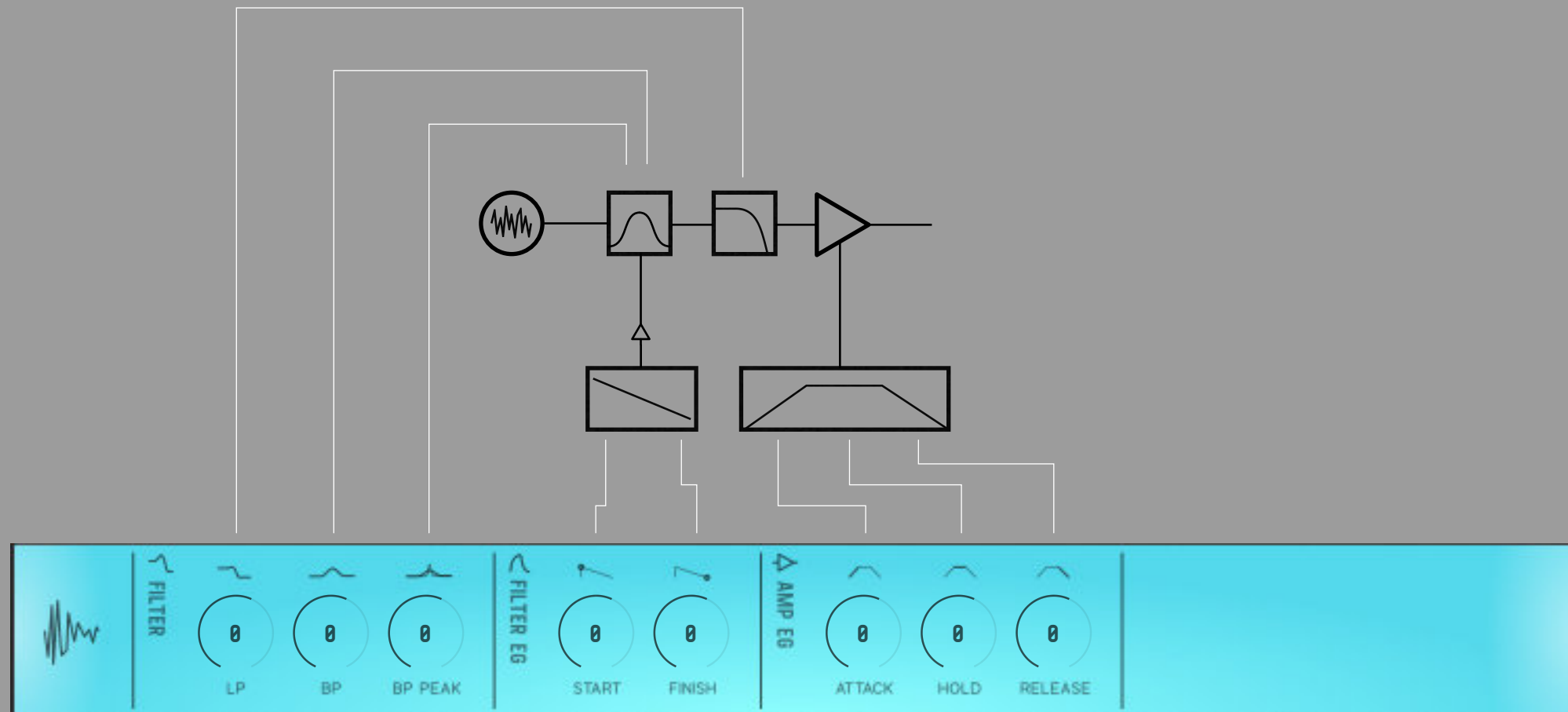
CUTOFF Filter cutoff
RES Amount of resonance
HI PASS Cutoff of hi-pass filter

AMP EG Control amplitude over time



DRUM SYNTHESIS

Classic synthesized drum sounds are at the heart of GridSynth.



NOISE BURST

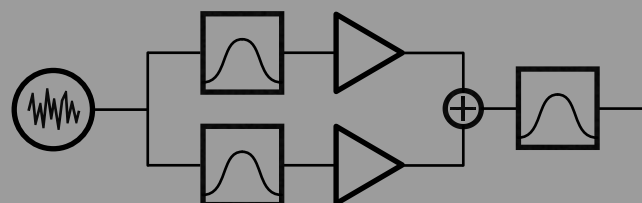
The noise burst module can make a number of sounds from a small number of parameters including: noise build up, hi-hat, cymbal and shakers.

This module band pass cutoff can be modulated with a two point envelope generator (START, FINISH)

LP Low-pass cutoff
 BP Band pass cutoff
 BP PEAK Band pass peak

START Starting frequency of filter modulator
 FINISH Ending frequency of filter modulator

AMP EG Control amplitude over time

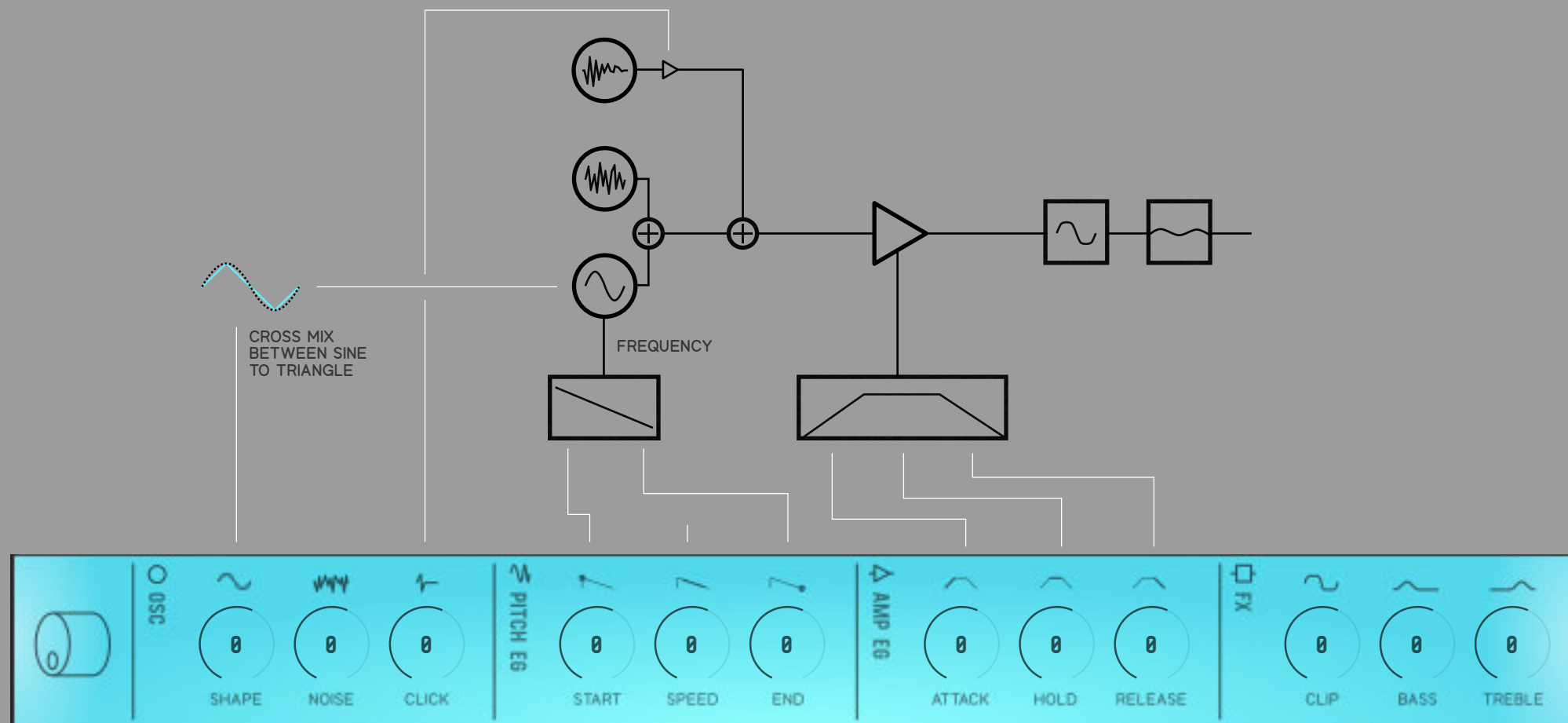


CLAP

A rudimentary 808 clap.

FREQ 1 Band pass 1 cutoff frequency
 FREQ 2 Band pass 2 cutoff frequency
 FREQ 3 Band pass 3 cutoff frequency

ATTACK Attack of both signals
 DELAY The second band pass trigger can be delayed
 DECAY 1 Decay of first filter
 DECAY 2 Decay of second filter



BASS DRUM

808 style bass drum.

SHAPE
NOISE
CLICK

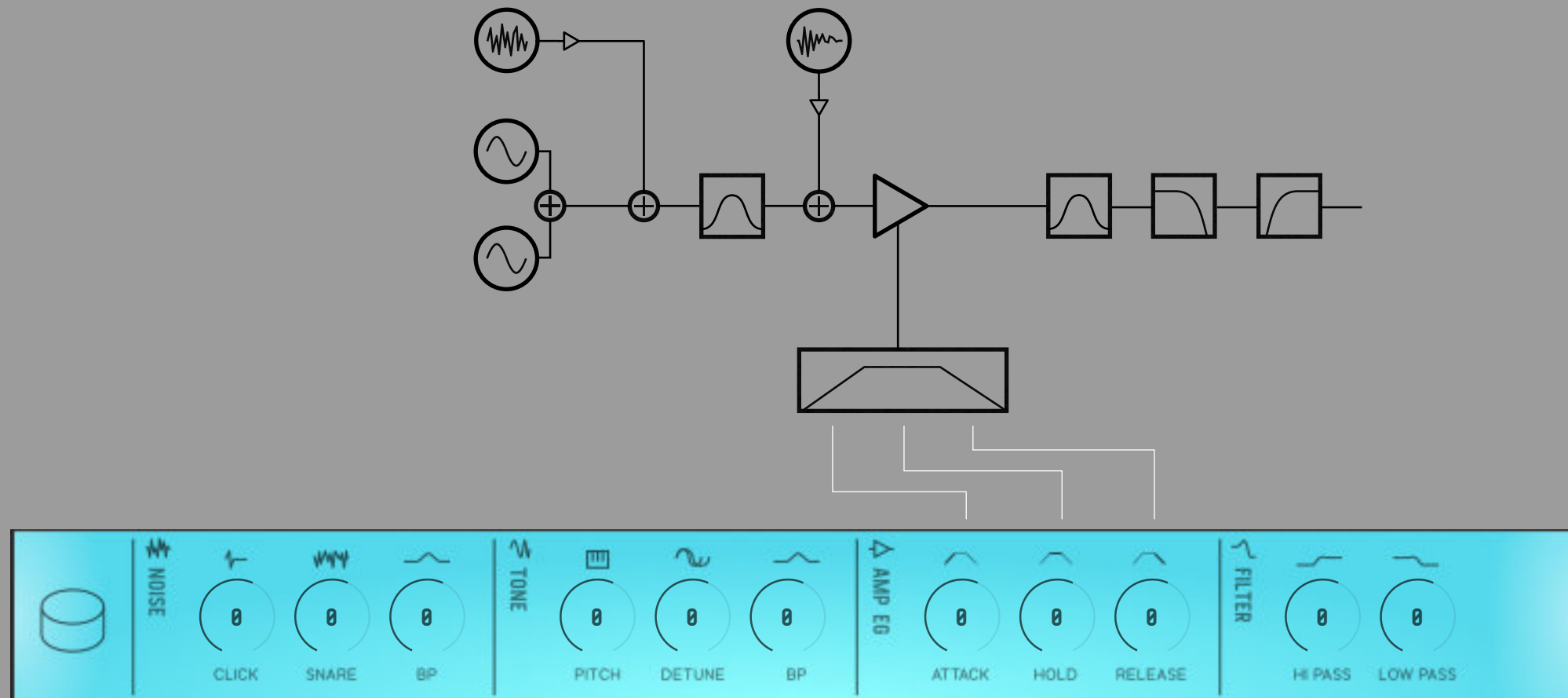
Fade between sine and triangle wave
Amplitude of noise
Amplitude of click

START
SPEED
END

The starting frequency of the main oscillator
The time taken to move from start to end
The end frequency of the oscillator

AMP EG

Control amplitude over time



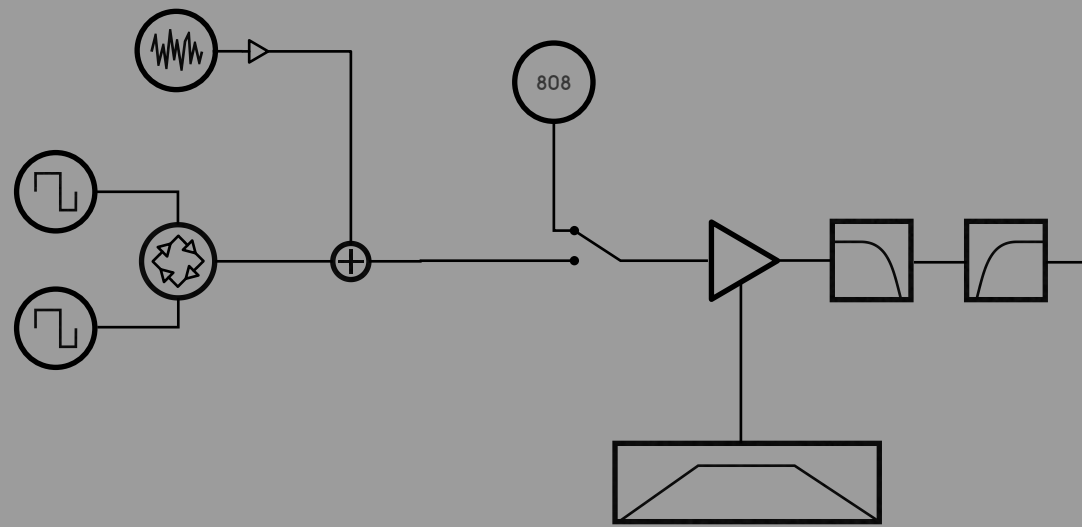
SNARE

Modules after vintage analogue drum machines.

- CLICK** Amplitude of click
- SNARE** The amplitude of snare rattle
- BP** Band pass cutoff frequency

- PITCH** Skin pitch
- DETUNE** Amount of detuneing of the two skins
- BP** Second band pass filters cutoff frequency

- AMP EG** Control amplitude over time



HI HAT

808 style and ring modulation configuration available.

808

FREQ

Toggle between two models

RING F.

Carrier oscillator frequency (808 mode excluded)

RING A.

Modulator oscillator frequency (808 mode excluded)

NOISE

Modulator amount (808 mode excluded)

Crossfade between oscillator and noise (808 mode excluded)

AMP EG

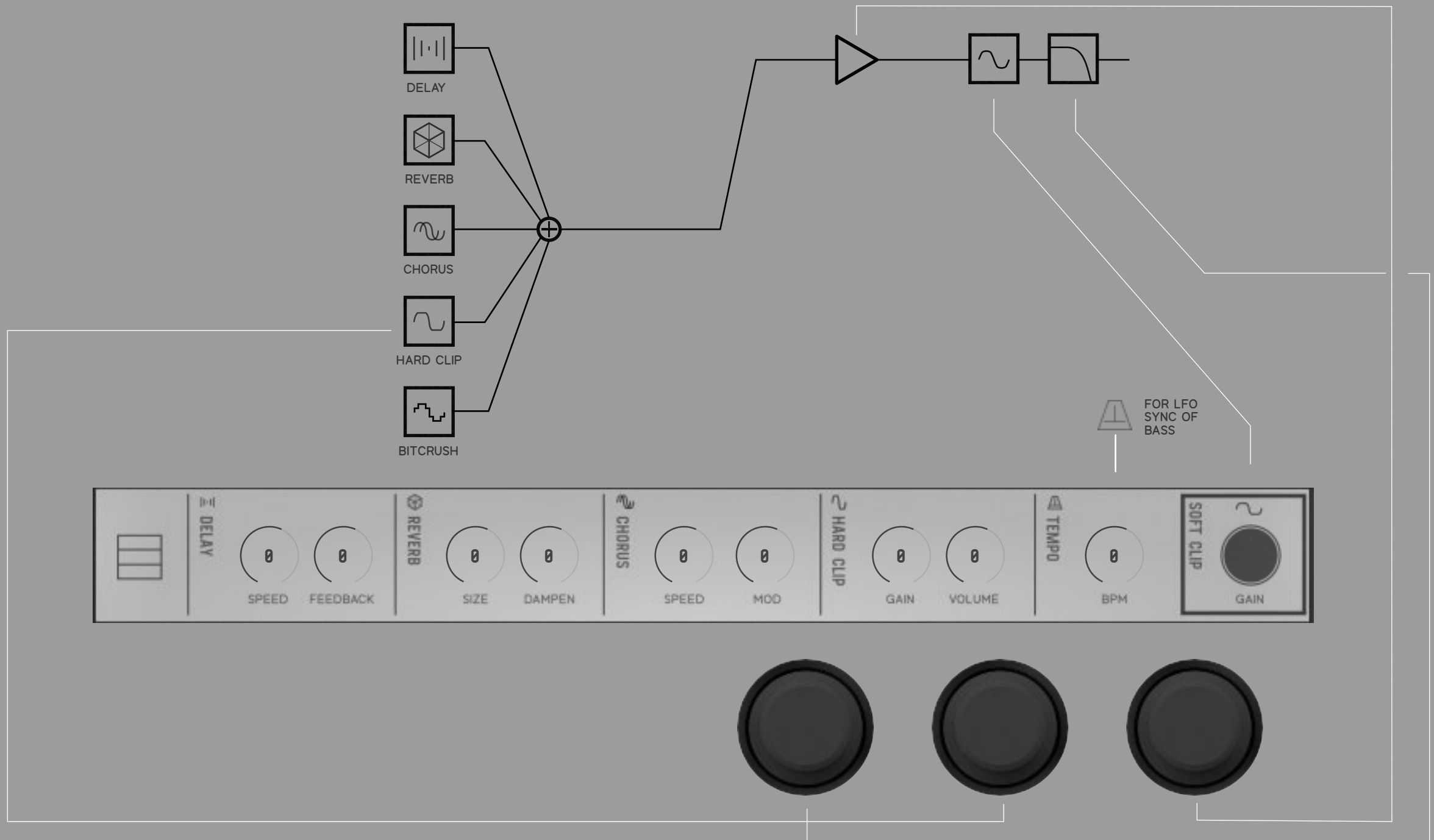
Control amplitude over time.

HOLD


(808 mode excluded)

FILTER

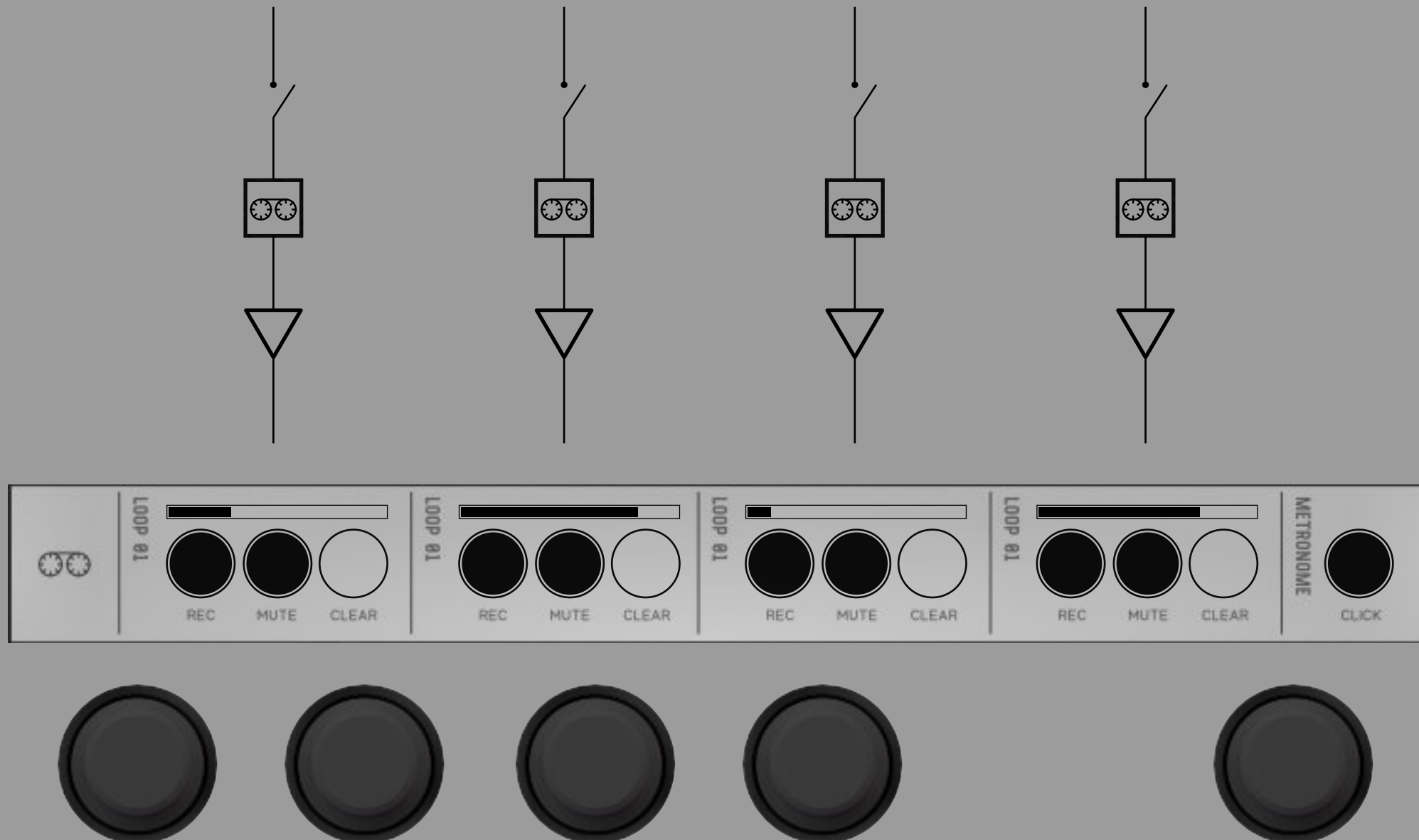
Hi-pass and low-pass filter cutoff




MASTER

Press the  button You can change the master parameters from here. As well as tempo, master volume, 4pole low-pass, soft clip.

Send effects have basic parameters but can add a huge amount of depth to your performance.



LOOPER

Press the  button to bring up the looper. 4 loop tracks with volatile memory (unsaved) are available

Click track can be toggled on and off, and its volume is adjustable.

Rec (Record) lets the signal into the loop

Mute loop. Hold to clear data at play head. Note that if you want to clear the whole track you must hold the clear button for the whole bar.

Tempo can be adjusted from the master modular page.

TROUBLE SHOOTING

NO SOUND

Check the following:

1. Mute and unmute device
2. Adjust the volume on the device
3. Close multitasking apps not in use
4. Close PRFORM and re-launch it

REPORT A BUG

I hate bugs as much as you do. If you see one please email me, and let me know what device and OS you are running.

Thank you – info@designbypaul.co.uk

REQUEST A NEW FEATURE

I'm intrested in how you use my apps and for any improvments you would like to suggest.

send your requests to me at
info@designbypaul.co.uk